

*Central District of California
Annual Report of
Caseload Statistics
Fiscal Year 2013*



*Published by
Office of the Clerk of Court
For the Central District of California*

May 14, 2014

CENTRAL DISTRICT OF CALIFORNIA

CASELOAD STATISTICS

Caseload Measures

- District Caseload Measures 1
- Civil Caseload Measures 2
- Criminal Caseload Measures 3

Civil Case Filings

- Civil Case Filings by Nature of Suit 4
- Civil Case Filings by Nature of Suit, FY2011-2013 5
- Civil Removal Filings 6
- Non-Prisoner Pro Se Filings 7

Criminal Defendant Filings

- Criminal Defendant Filings by Major Offense 8
- Criminal Defendant Filings by Major Offense,
FY 2011-2013 9

Magistrate Judge Statistics

- Civil Case Filings Referred to Magistrate Judges for
Report and Recommendation 10
- Consents to Magistrate Judges 11
- Magistrate Judge Settlement Statistics 12

Other Caseload Statistics

- Weighted Filings Per Judgeship 13
- ADR Program 14
- Patent Pilot Program 15

District Caseload Measures
(12-Month Period Ending September 30, 2013)

	2009	2010	2011	2012	2013	% Change (FY13/12)	% Change (FY13/09)
FILINGS							
Civil	13,607	13,850	15,257	15,739	14,733	-6.4%	8.3%
Criminal (Cases)	1,557	1,429	1,314	1,347	1,065	-20.9%	-31.6%
Total	15,164	15,279	16,571	17,086	15,798	-7.5%	4.2%
TERMINATIONS							
Civil	13,417	13,575	15,106	15,653	15,323	-2.1%	14.2%
Criminal (Cases)	1,529	1,668	1,417	1,333	1,161	-12.9%	-24.1%
Total	14,946	15,243	16,523	16,986	16,484	-3.0%	10.3%
PENDING							
Civil	10,172	10,468	10,619	10,728	10,240	-4.5%	0.7%
Criminal (Cases)	2,323	2,184	2,081	2,128	2,028	-4.7%	-12.7%
Total	12,495	12,652	12,700	12,856	12,268	-4.6%	-1.8%

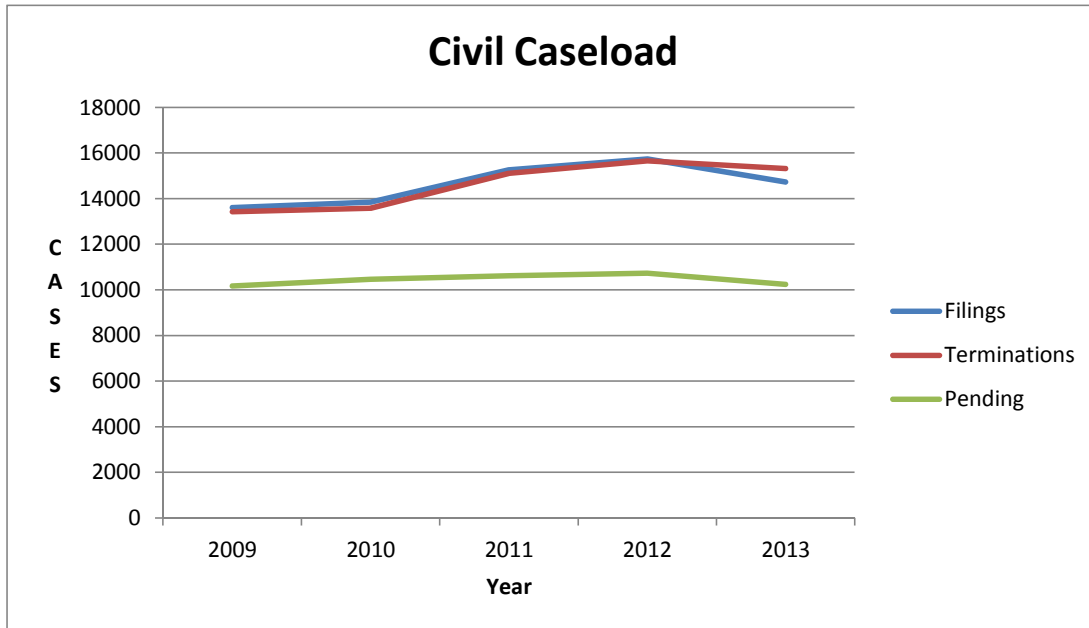
In fiscal year 2013, the Central District of California saw a 7.5 percent decrease in total civil and criminal case filings from 17,086 in 2012 to 15,798 in 2013. Total case terminations numbered 16,484, declining three percent from 16,986 in 2012. Pending cases totaled 12,268, a decrease of 4.6 percent from 12,856. During the five-year period ending September 30, 2013, total civil and criminal case filings increased by 4.2 percent from 15,164 to 15,798; total terminations increased by 10.3 percent from 14,946 to 16,484; and total pending cases dropped slightly by 1.8 percent from 12,495 to 12,268.

Civil Caseload Measures

(12-Month Period Ending September 30, 2013)

	2009	2010	2011	2012	2013	% Change (FY13/12)	% Change (FY13/09)
FILINGS	13,607	13,850	15,257	15,739	14,733	-6.4%	8.3%
TERMINATIONS	13,417	13,575	15,106	15,653	15,323	-2.1%	14.2%
PENDING	10,172	10,468	10,619	10,728	10,240	-4.5%	0.7%

A total of 14,733 civil cases were filed in fiscal year 2013, a 6.4 percent decrease from the 15,739 filings in fiscal year 2012 primarily in real property cases, prisoner petitions, and the 'all other' nature of suit category (refer to Civil Filings by Nature of Suit bar chart). Civil filings have not declined since 2004. During the five-year period ending September 30, 2013, civil filings increased by 8.3 percent from 13,607 to 14,733; civil terminations increased by 14.2 percent from 13,417 to 15,323; and pending civil cases increased slightly by 0.7 percent from 10,172 to 10,240.

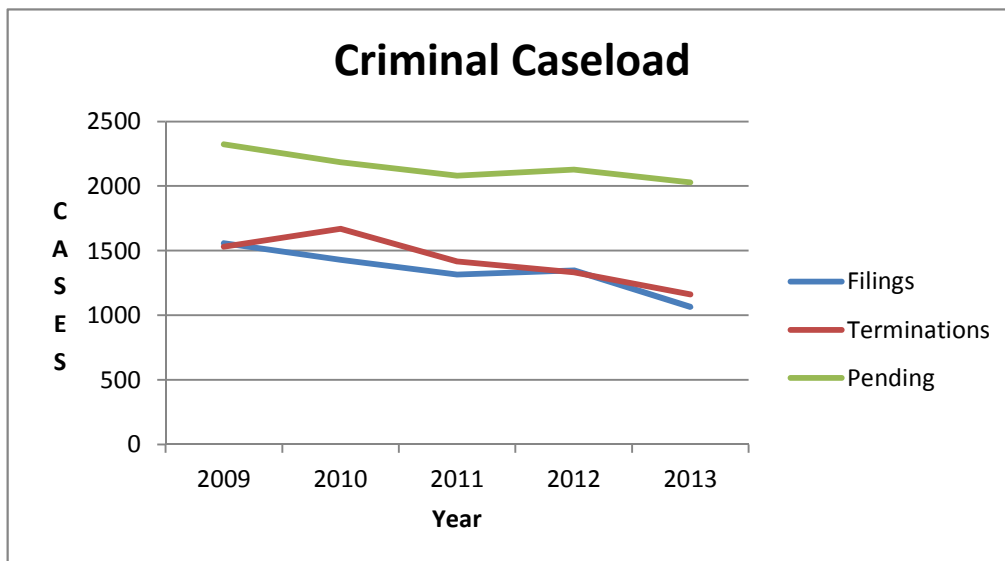


Criminal Caseload Measures

(12-Month Period Ending September 30, 2013)

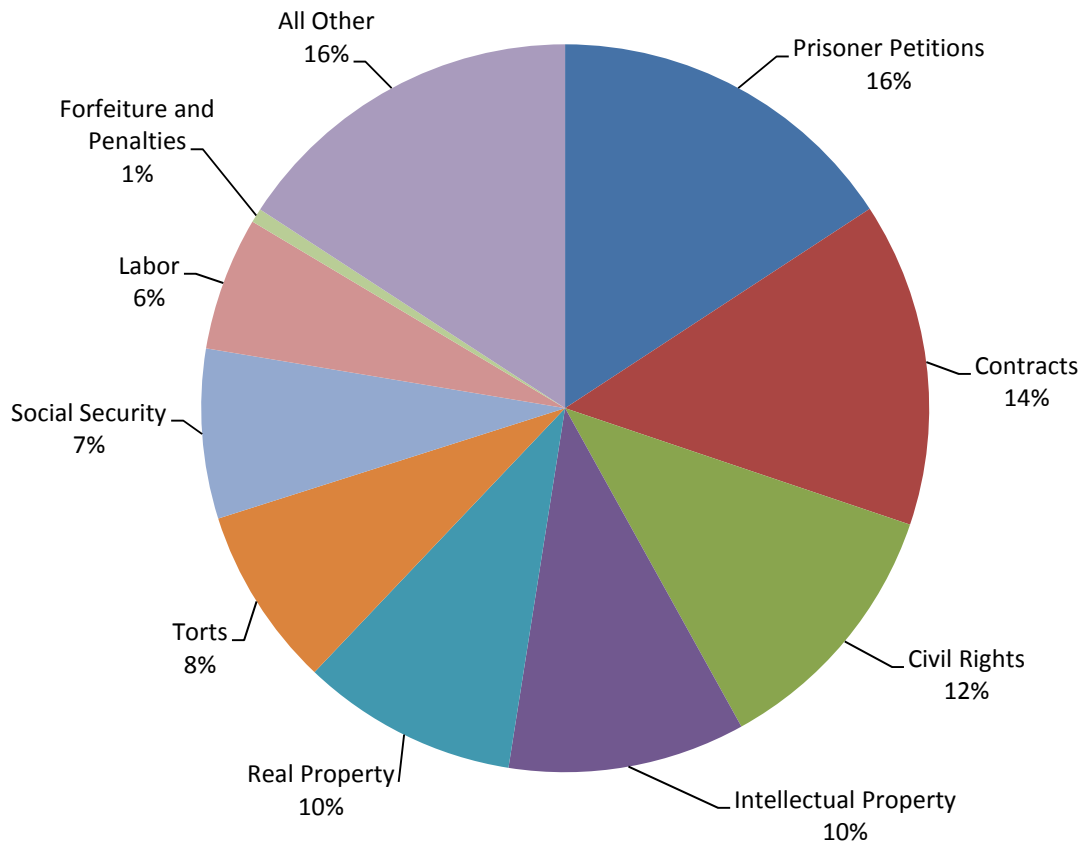
	2009	2010	2011	2012	2013	% Change (FY13/12)	% Change (FY13/09)
FILINGS							
Criminal Cases	1,557	1,429	1,314	1,347	1,065	-20.9%	-31.6%
Defendants	2,581	2,093	2,068	2,023	1,652	-18.3%	-36.0%
TERMINATIONS							
Criminal Cases	1,529	1,668	1,417	1,333	1,161	-12.9%	-24.1%
Defendants	2,104	2,434	2,128	2,020	1,881	-6.9%	-10.6%
PENDING							
Criminal Cases	2,323	2,184	2,081	2,128	2,028	-4.7%	-12.7%
Defendants	3,934	3,551	3,491	3,527	3,231	-8.4%	-17.9%

In fiscal year 2013, criminal case filings decreased by 20.9 percent from 1,347 in 2012 to 1,065, while criminal defendants filings dropped by 18.3 percent from 2,023 in 2012 to 1,652 primarily in immigration and drug offense cases. This decline is attributable to four primary factors: 1) the impact sequestration has had on federal law enforcement; 2) declining resources in the U. S. Attorney's Office for prosecuting criminal cases 3) the unavailability of assistant U. S. attorneys to charge new criminal cases as they were occupied with several large-scale gang cases charged in past years; and 4) fewer immigration cases were referred for prosecution. Criminal case and defendant filings began dropping in 2009. During the five-year period ending September 30, 2013, criminal case filings decreased by 31.6 percent from 1,557 to 1,065; criminal defendant filings fell 36 percent from 2,581 to 1,652; criminal case terminations decreased by 24.1 percent from 1,529 to 1,161; and pending criminal cases dropped by 12.7 percent from 2,323 to 2,028.



Civil Case Filings

12-Month Period Ending September 30, 2013

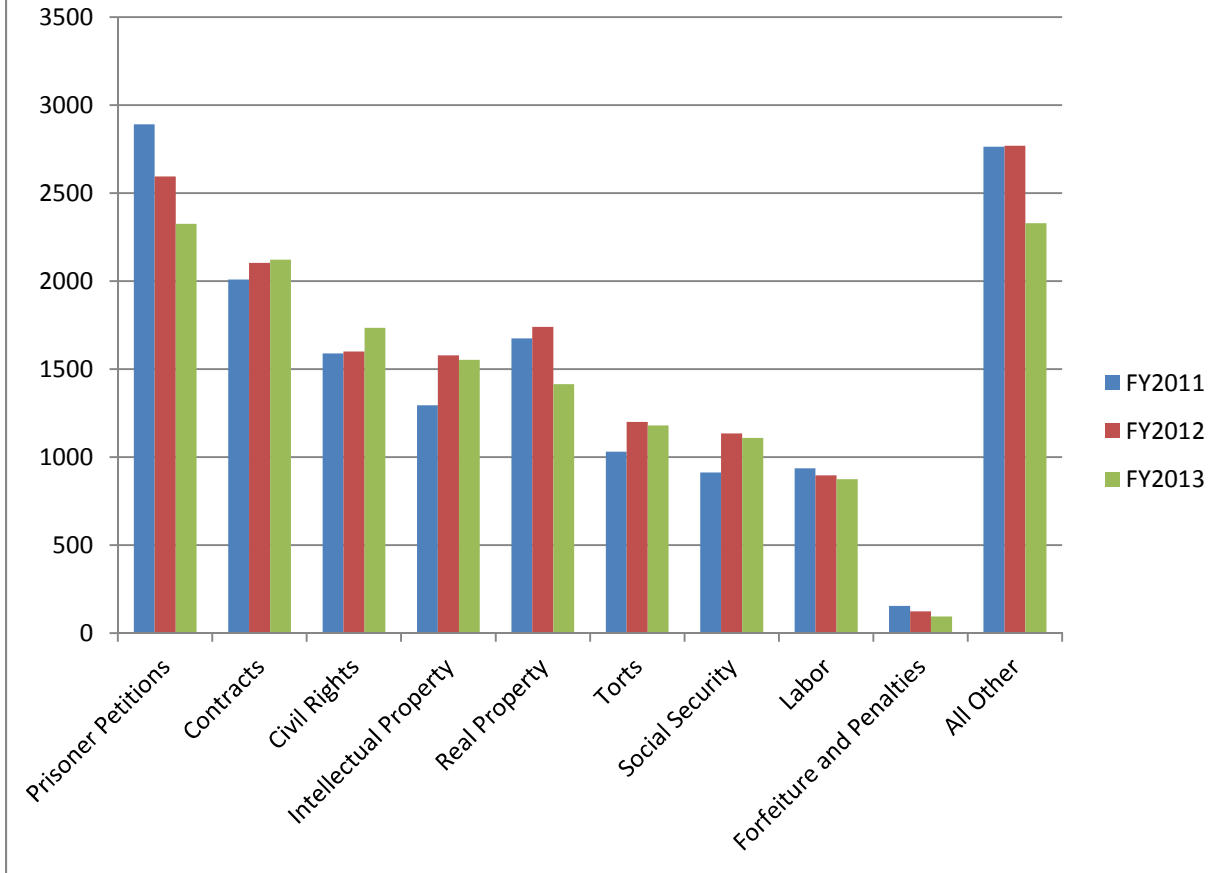


Prisoner Petitions	2325
Contracts	2121
Civil Rights	1735
Intellectual Property	1553
Real Property	1414
Tort	1180
Social Security	1109
Labor	874
Forfeiture and Penalties	94
All Other	2328
Total	14733

Intellectual property filings remained steady over the previous fiscal year, while patent cases rose 12 percent and copyright cases fell 11 percent. Real property cases fell 19 percent; prisoner petitions dropped by 10 percent; and filings in the "all other" category fell by 16 percent from fiscal year 2012.

Civil Filings by Nature of Suit

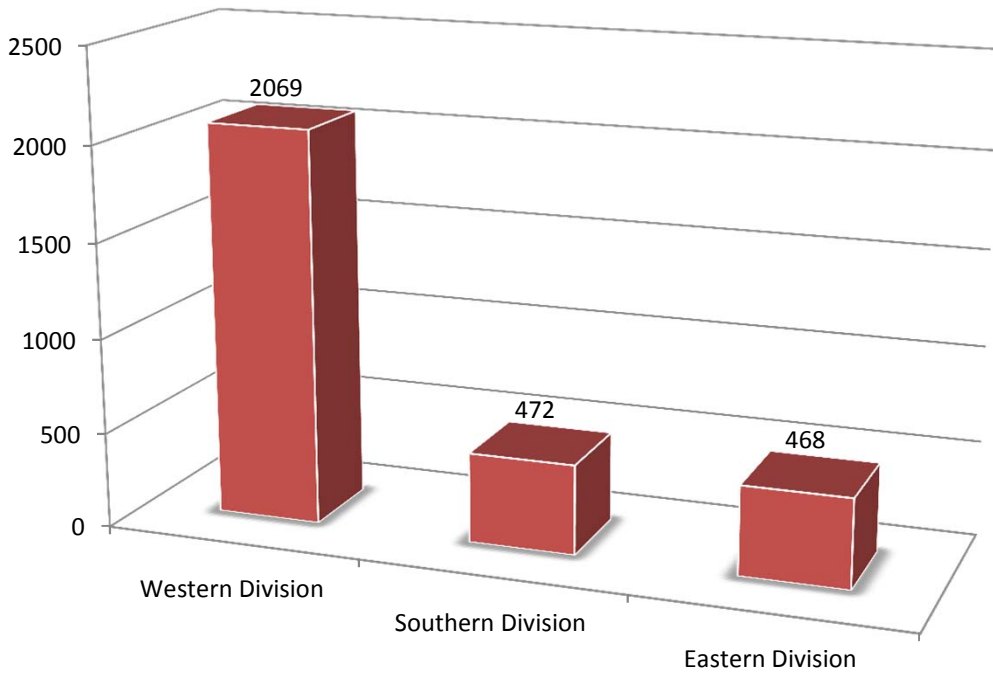
Fiscal Years 2011 - 2013



	FY2011	FY2012	FY2013	% chg 13/12	% chg 13/11
Prisoner Petitions	2891	2594	2325	-10%	-20%
Contracts	2009	2104	2121	1%	6%
Civil Rights	1589	1600	1735	8%	9%
Intellectual Property	1295	1578	1553	-2%	20%
Real Property	1675	1739	1414	-19%	-16%
Torts	1030	1200	1180	-2%	15%
Social Security	913	1134	1109	-2%	21%
Labor	937	897	874	-3%	-7%
Forfeiture and Penalties	154	124	94	-24%	-39%
All Other	2764	2769	2328	-16%	-16%
Total Civil Filings	15257	15739	14733	-6%	-3%

Civil Removal Filings

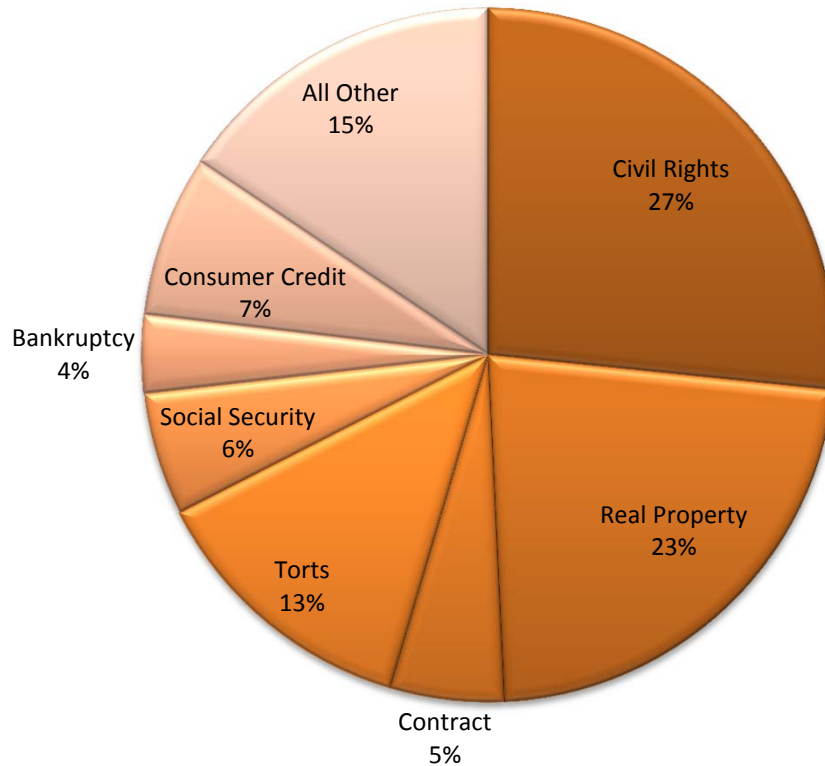
12-Month Period Ending September 30, 2013



Civil removal filings represent 20 percent of the total civil filings in the Central District of California. 69 percent of the total removals were filed in the Western Division; 16 percent were filed in the Southern Division; and 16 percent were filed in the Eastern Division. Nearly half of all civil removal filings are real property cases (28 percent) and civil rights cases (21 percent). Removal filings fell nine percent from a year ago, primarily in real property cases.

Non-Prisoner Pro Se Filings

12-Month Period Ending September 30, 2013

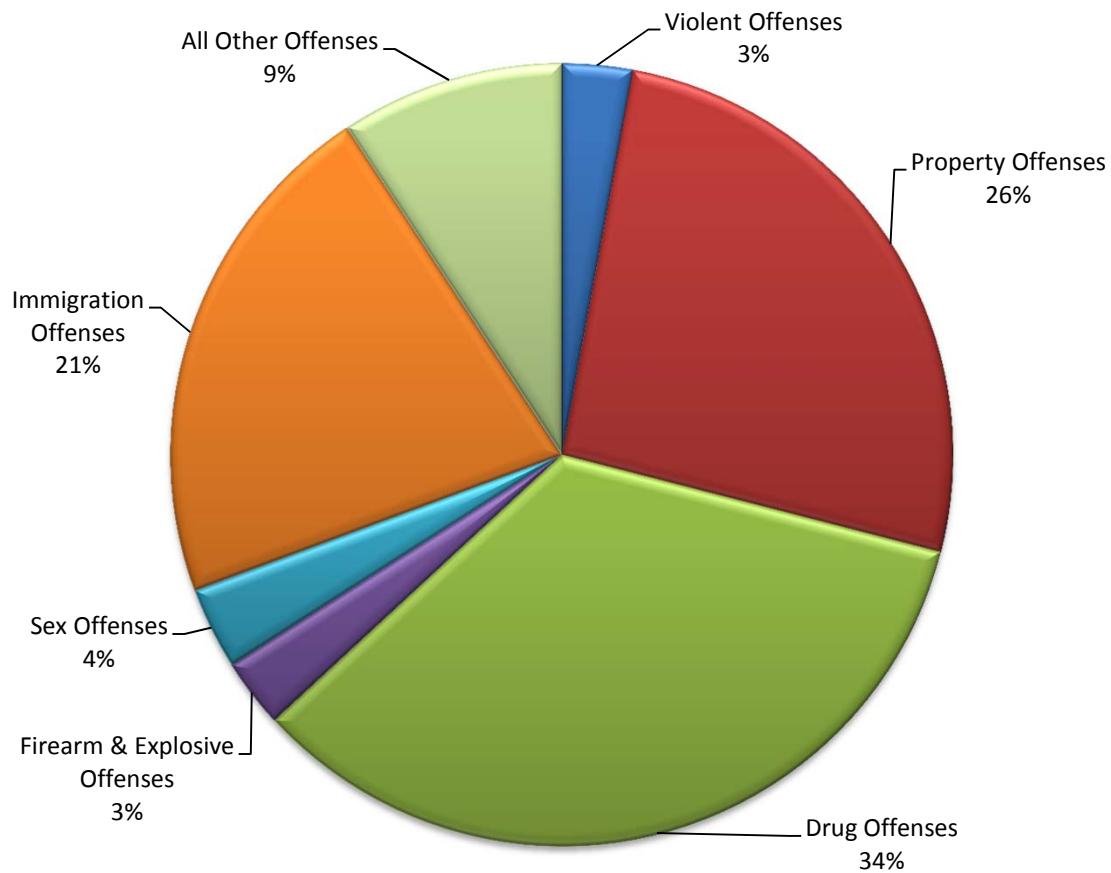


Civil Rights	321
Real Property	273
Torts	156
Consumer Credit	91
Social Security	69
Contract	64
Bankruptcy	44
All Other	188
Total	1206

Civil filings by non-prisoner pro se litigants represent 8 percent of the Central District of California's total civil filings. Twenty-seven percent of non-prisoner pro se filings were civil rights cases; 23 percent were real property cases, comprising half of all non-prisoner pro se filings. Of the 955 civil case filings with pro se defendants filed in fiscal year 2013, 601 (63 percent) were real property cases.

Criminal Defendant Filings

12-Month Period Ending September 30, 2013

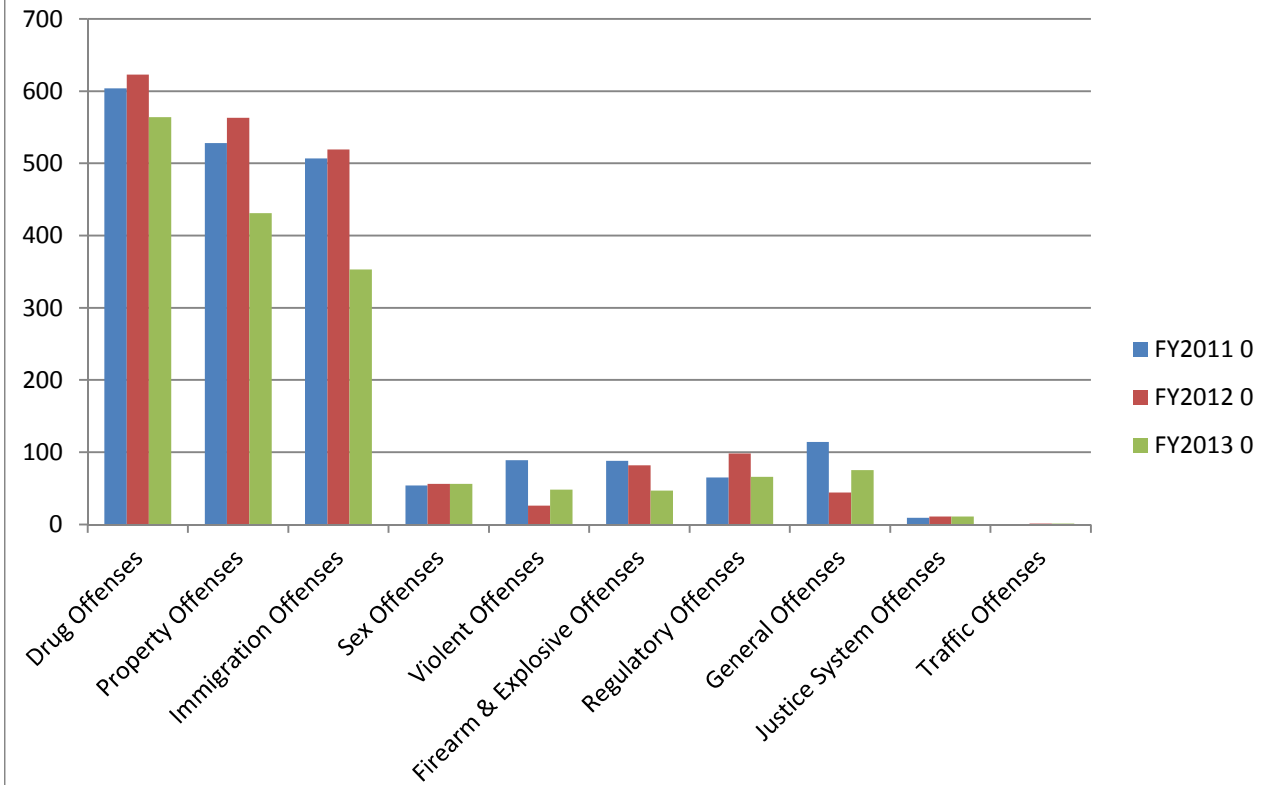


Drug Offenses	564
Property Offenses	431
Immigration Offenses	353
Sex Offenses	56
Violent Offenses	48
Firearm & Explosive Offenses	47
All Other Offenses	153
Total	1652

The top three major offense categories for criminal defendant filings in fiscal 2013 are drug offenses (34 percent); property offenses (26 percent); and immigration offenses (21 percent). As a result of the overall decline in criminal filings, criminal defendant filings also declined significantly in each of these three major offense categories. Defendants charged with violent offenses jumped 85 percent from 26 to 48 in 2013.

Criminal Defendant Filings by Major Offense

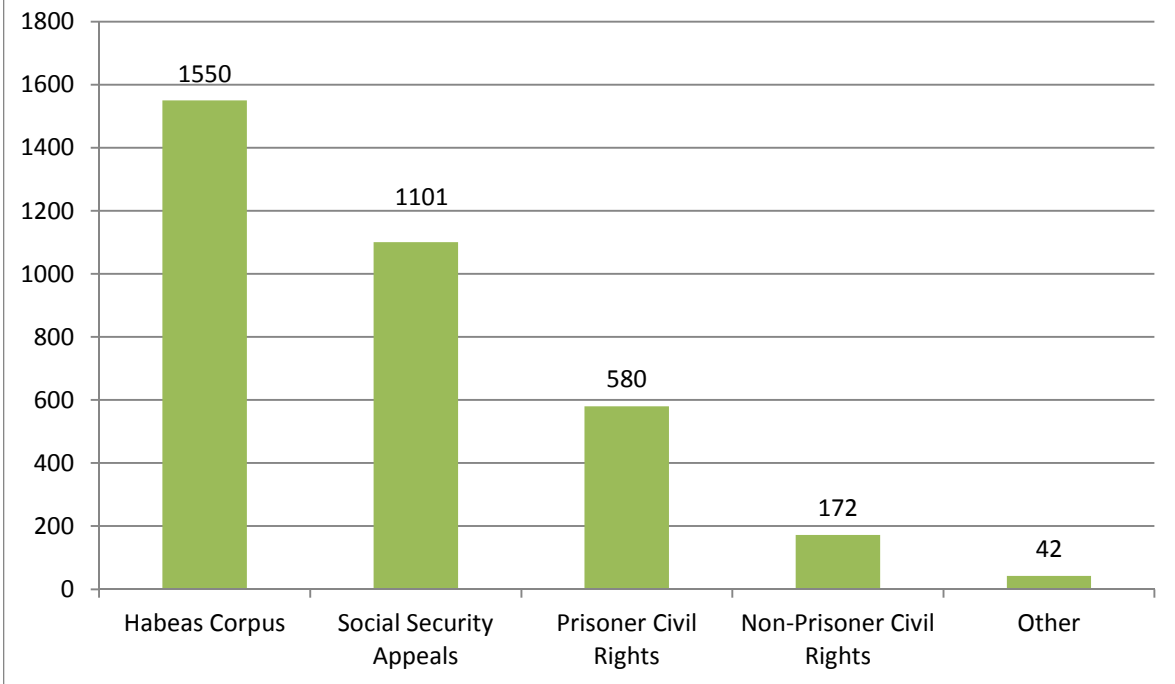
Fiscal Year 2011 - 2013



	FY2011	FY2012	FY2013	% chg 13/12	% chg 13/11
Drug Offenses	604	623	564	-9%	-7%
Property Offenses	528	563	431	-23%	-18%
Immigration Offenses	507	519	353	-32%	-30%
Sex Offenses	54	56	56	2%	4%
Violent Offenses	89	26	48	7%	-46%
Firearm & Explosive Offenses	88	82	47	-43%	-47%
Regulatory Offenses	65	98	66	-33%	2%
General Offenses	114	44	75	70%	-34%
Justice System Offenses	9	11	11	0%	22%
Traffic Offenses	0	1	1	0%	0%
Total Criminal Defendant Filings	2058	2023	1652	-18%	-20%

Civil Case Filings Referred to Magistrate Judges for Report and Recommendation

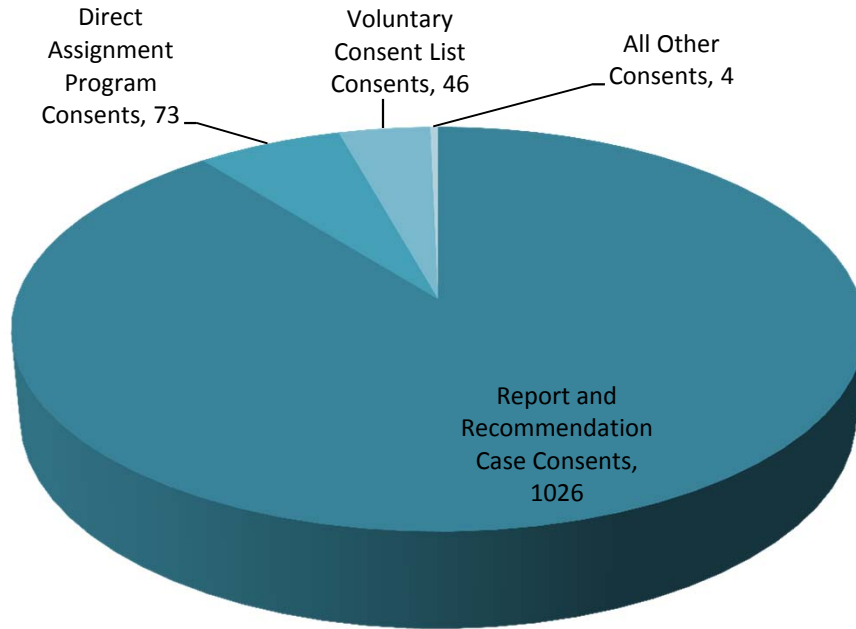
12-Month Period Ending September 30, 2013



In 2013, 23 percent of the total civil filings were referred to magistrate judges for report and recommendations. Of the 3,445 cases referred for report and recommendations, 45 percent were habeas corpus petitions; 32 percent were social security appeal cases; 17 percent were prisoner civil rights cases; five percent were non-prisoner pro se civil rights cases; and one percent were other cases.

Consents to Magistrate Judges

January-December 2013



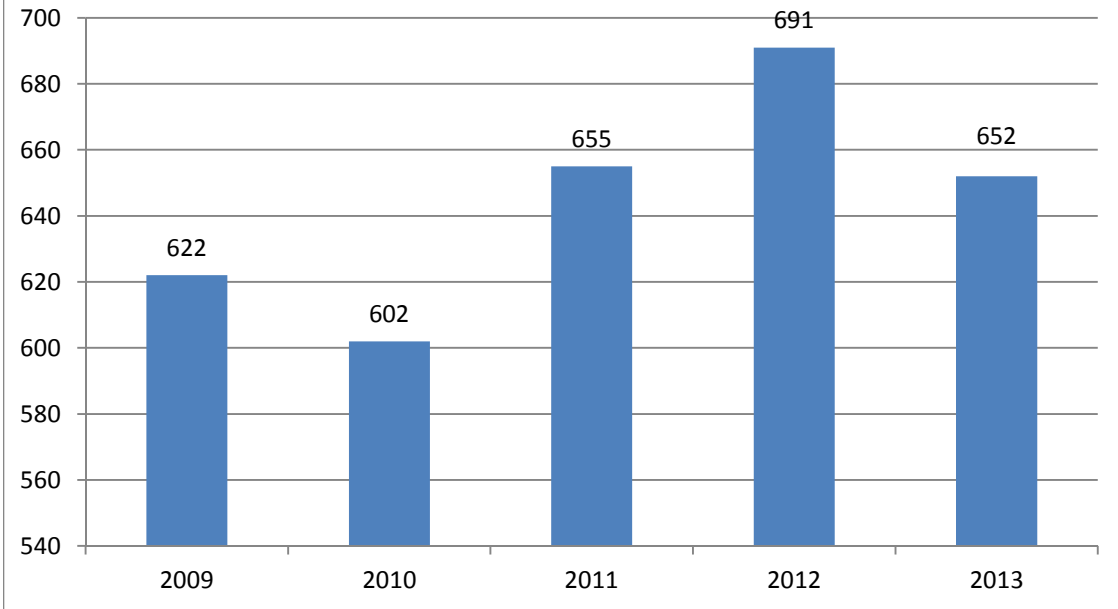
In 2013, parties in 1,149 cases consented to proceed before magistrate judges. Of these, all parties in 1,026 cases referred to a magistrate judge consented to proceed before the magistrate judge; all parties in 73 cases assigned through the Direct Assignment of Civil Cases to Magistrate Judges program consented to proceed before the magistrate judge, as did all parties in 46 cases through the Voluntary Consent List, and parties in four discovery cases consented to proceed before a magistrate judge.

MAGISTRATE JUDGE SETTLEMENT STATISTICS
Calendar Year 2013

Number of cases with settlement conferences conducted by magistrate judges	335
Number of settlement conferences conducted by magistrate judges	404
Number of cases settled	185
Percent of cases settled	55.2%

In 2013, magistrate judges held 404 settlement conferences in 335 cases. Of these cases, the magistrate judges settled 185, for a 55.2 percent settlement rate. The total number of hours spent in settling these cases was 1,765 hours, equivalent to 220 days.

Weighted Filings Per Judgeship FY2009-FY2013

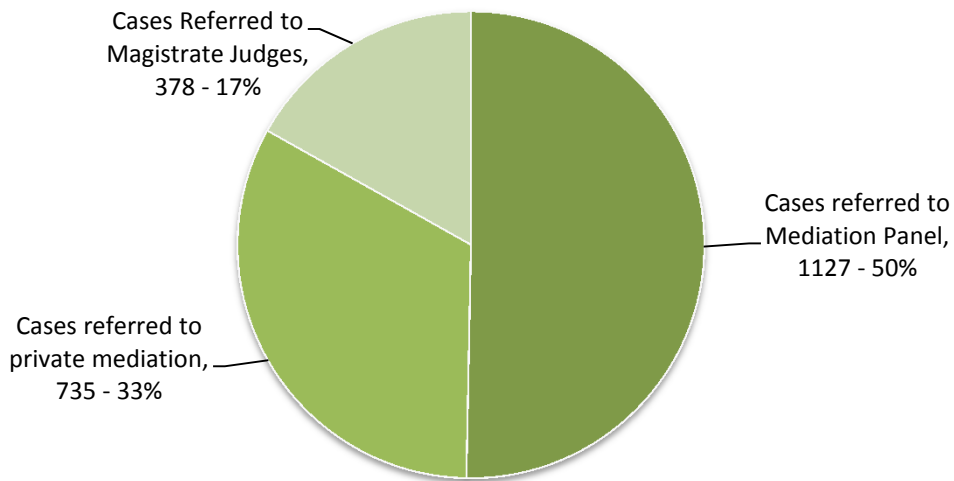


Weighted filings per judgeship for California Central was 652 for FY2013, down 6 percent from 691 from a year ago. The national average is 545 weighted filings per judgeship. The Central District of California ranked 13th in the nation and second in the Ninth Circuit in weighted filings.

ADR PROGRAM
CASES ORDERED TO ADR
January-December 2013

Total number of cases ordered to ADR:	2,240
Cases referred to Magistrate Judges	378
Cases referred to Mediation Panel	1,127
Cases referred to private mediation	735
Number of cases mediated by Panel Mediators:	533
Cases settled or partially settled at mediation:	243
Cases that did not settle at mediation:	290
Number of cases settled before mediation with Panel Mediator	232

Cases Ordered To ADR
January-December 2013



Twenty seven district judges in the Central District participate in the Court-Directed ADR Program. In 2013, 2,240 cases were referred to ADR. 533 mediations were conducted by panel mediators. Of these, 243 cases were resolved, or partially resolved, by the Mediation Panel, resulting in 45.6% of the cases referred to the Panel being resolved or partially resolved with the assistance of panel mediators. As of March 2014, the Court Mediation Panel is composed of 210 panel members who collectively possess substantive experience in 24 areas of law.

The Prisoner Settlement Program provides for the referral of certain prisoner civil rights cases to Magistrate Judge Victor E. Bianchini, recalled magistrate judge from the Northern and Western Districts of New York, for settlement proceedings at various California state prisons. In 2013, Magistrate Judge Bianchini held 29 settlement conferences, of which 25 were for the Central District and four were for the Southern District of California. The parties reached settlements in 23 cases.

**Central District of California
Patent Pilot Program
9/11/2011-12/31/2013**

	2011	2012	2013	Total	% chg 12/13
Total Number of Patent Cases Filed	110	519	417	1046	-20%
Patent Cases Initially Assigned to Patent Program Judges	18	55	44	117	-20%
Patent Cases Transferred to Patent Pilot Program	5	52	81	138	56%
Patent Cases Transferred to Patent Program Judges As a Result of Related Case Transfer, Self-Recusal, Return by Senior Judge, etc.	7	140	115	262	-18%
Total Number of Patent Cases Initially Assigned or Transferred to Patent Program Judges	30	247	240	517	-3%
Patent Cases Transferred Out of the Patent Pilot Program	1	14	10	25	-29%

In 2013, the six judges designated to receive patent cases under the Patent Pilot Program received 240 patent cases, of which 44 were initially assigned to them, 81 cases were transferred to the program from non-participating judges, and 115 were transferred to the program as a result of related case transfers or other reasons. The number of patent cases transferred to the program by non-participating judges rose 56 percent from 2012. Since the program started in September 2011, there are 517 cases in the program.